

**Corporate Presentation**  
**June 2019**  
**TSX-V: RK**



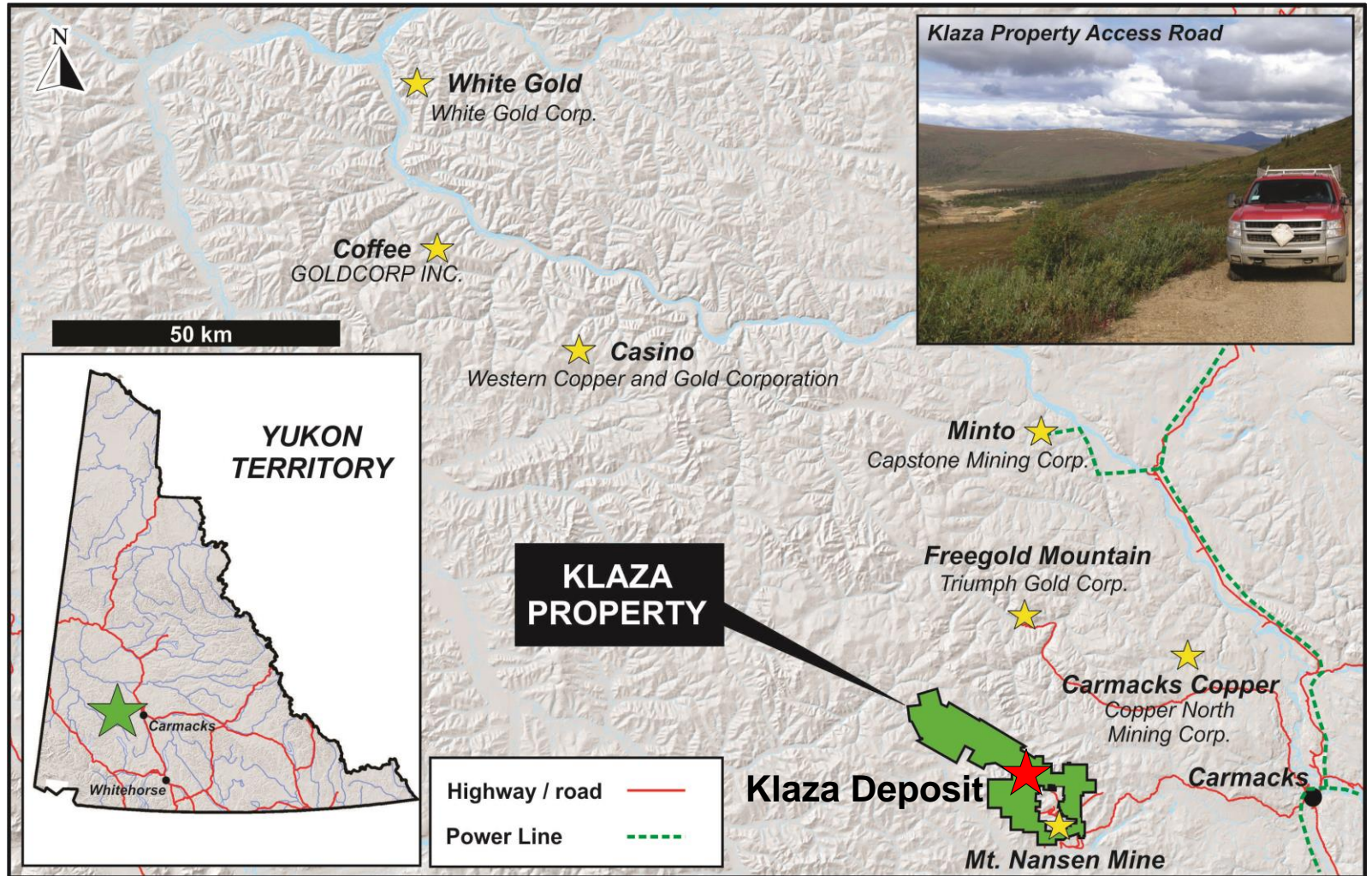
  
**Rockhaven**  
RESOURCES LTD.

*Certain information contained herein may constitute forward-looking statements within the meaning of applicable securities laws. Forward-looking statements may include estimates, plans, expectations, opinions, forecasts, projections, guidance or other statements that are not statements of fact. Although the Company believes that the expectations reflected in such forward-looking statements are reasonable, it can give no assurance that such expectations will prove to have been correct. The Company cautions the actual performance will be affected by a number of factors, many of which are beyond the Company's control, and that future events and results may vary substantially from what the Company currently foresees. Discussion of the various factors that may affect future results is contained in the Company's Annual Report which is available at [www.sedar.com](http://www.sedar.com). The Company's forward-looking statements are expressly qualified in their entirety by the cautionary statement.*

*Additional information about the Klaza property is summarized in Rockhaven's August 2nd, 2018 technical report titled, "Technical Report Describing Updated Diamond Drilling, Metallurgical Testing and Mineral Resources on the Klaza Property, Yukon, Canada." which can be viewed at [www.sedar.com](http://www.sedar.com) under the Rockhaven profile or on the Rockhaven website at [www.rockhavenresources.com](http://www.rockhavenresources.com).*

*The technical information in this presentation has been approved by Matthew R. Dumala, P.Eng., a geological engineer with Archer Cathro & Associates (1981) Limited and qualified person for the purpose of National instrument 43-101.*

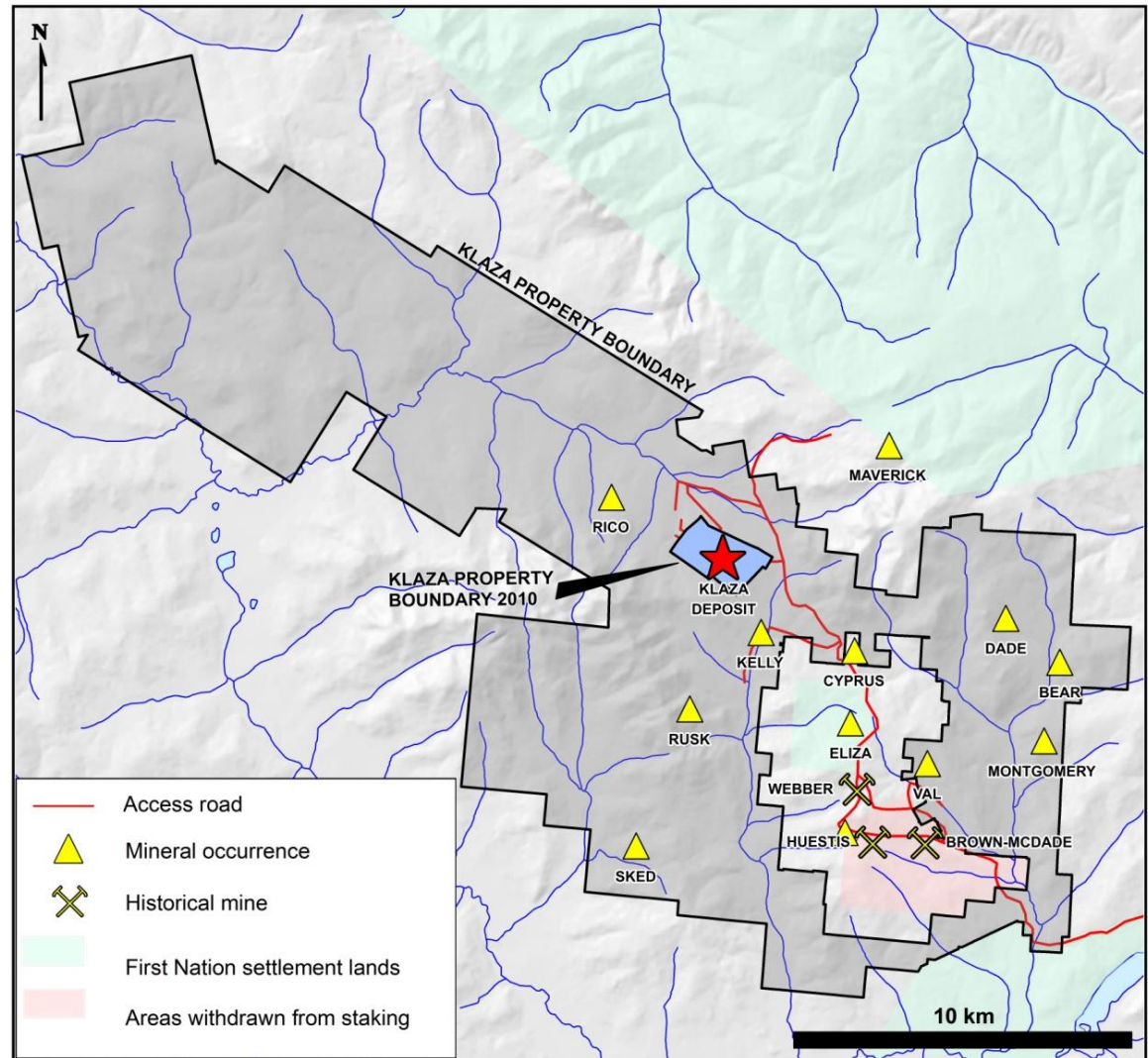
# ROAD-ACCESSIBLE LOCATION



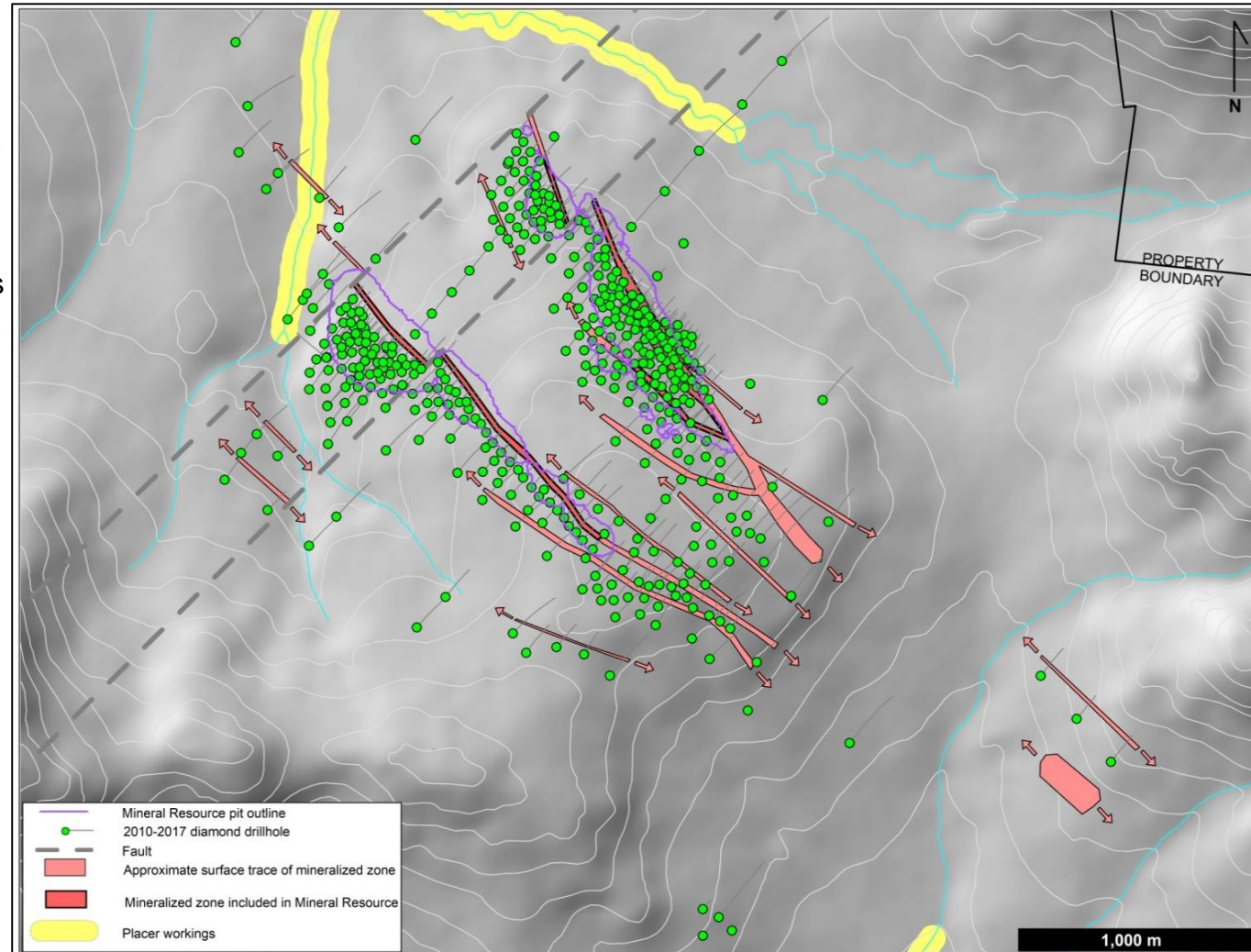
# DEVELOPED AREA WITH EXCELLENT INFRASTRUCTURE



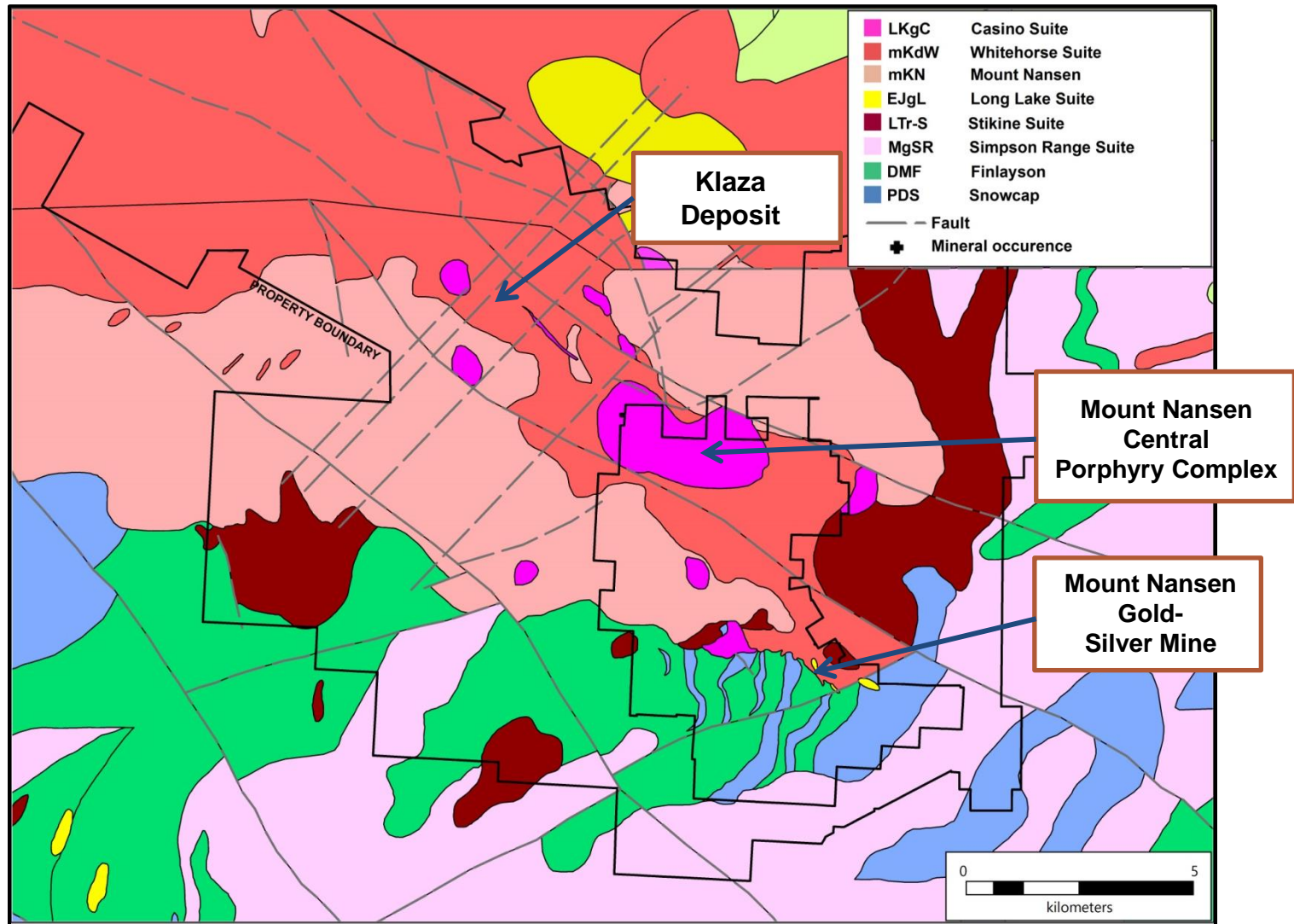
- 100% owned by Rockhaven with **no underlying royalties** on resource areas
- Property covers 287 sq kms
- 1,273 of the total 1,478 claims are unencumbered by royalties or interests
- Claims have been acquired patiently over time and in-line with our growing knowledge of the district



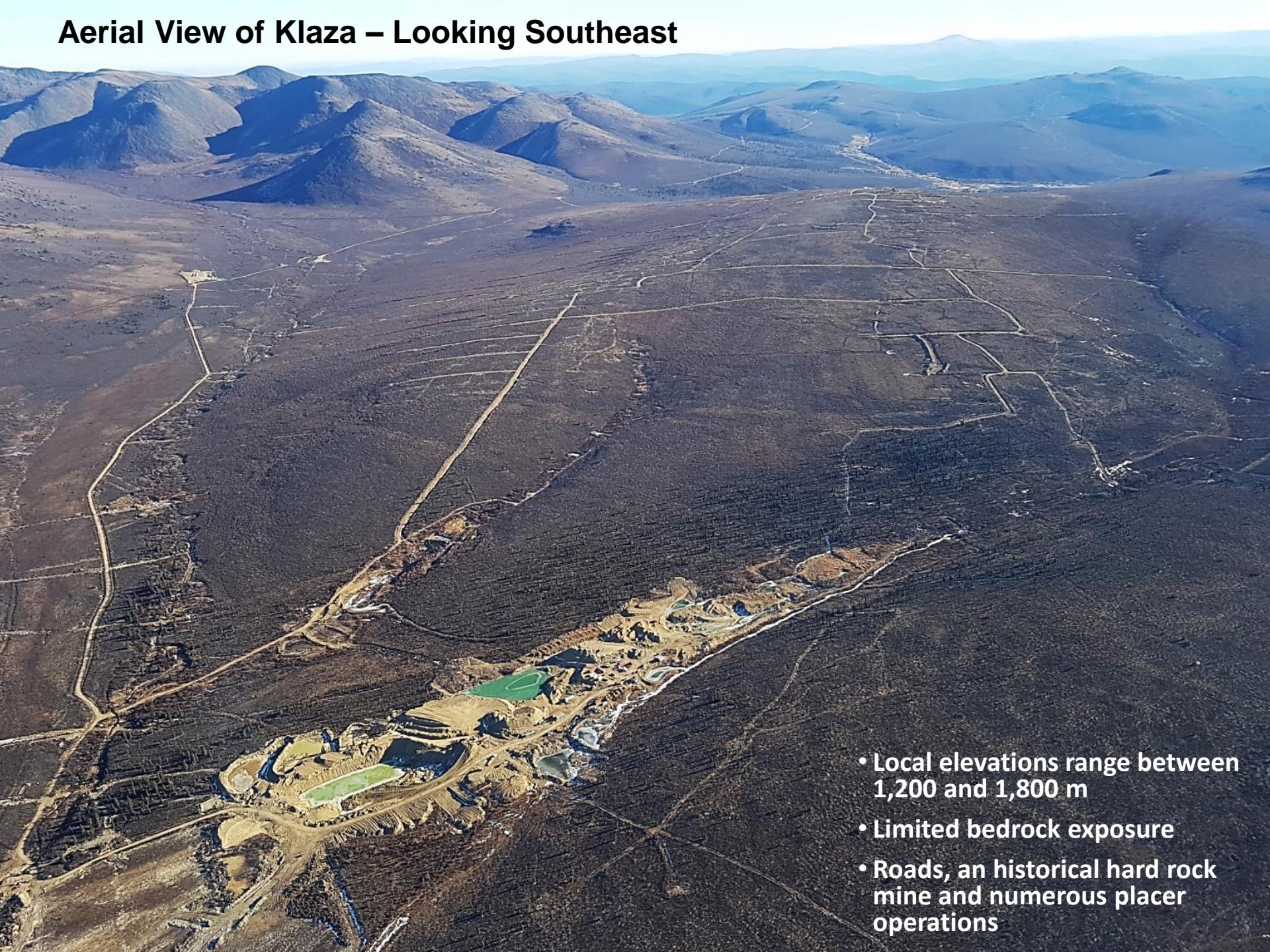
- 94,000 m of drilling in 434 holes completed between 2010 and 2017
- 24,000 m of excavator trenching
- Eleven structurally controlled zones with:
  - Good continuity
  - Mineralization traced from surface
  - Open ended strike lengths ranging between 250 and 2,400 m



# MOUNT NANSEN GOLD BELT GEOLOGY



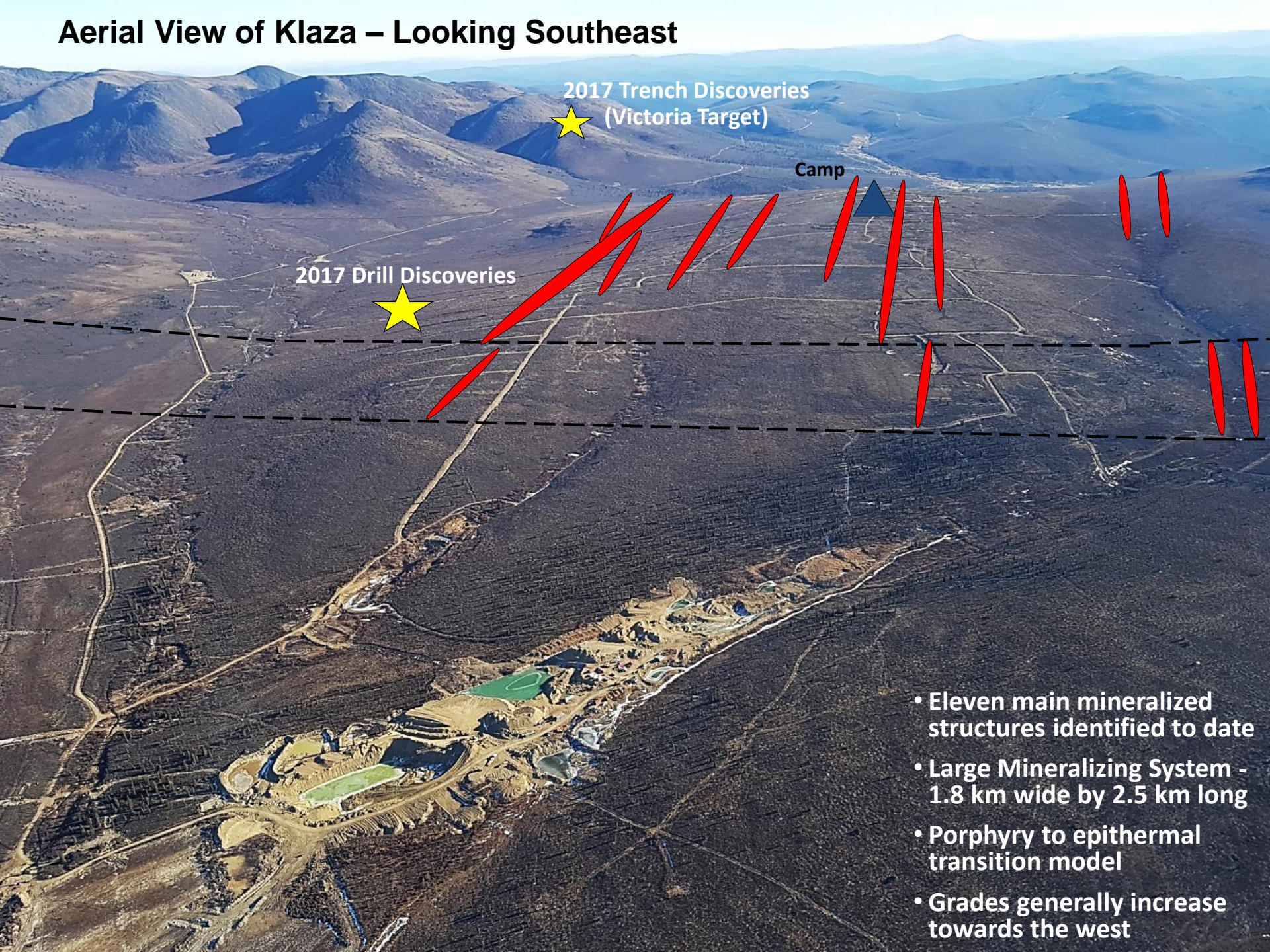
# Aerial View of Klaza – Looking Southeast



- Local elevations range between 1,200 and 1,800 m
- Limited bedrock exposure
- Roads, an historical hard rock mine and numerous placer operations



# Aerial View of Klaza – Looking Southeast



2017 Trench Discoveries  
(Victoria Target)

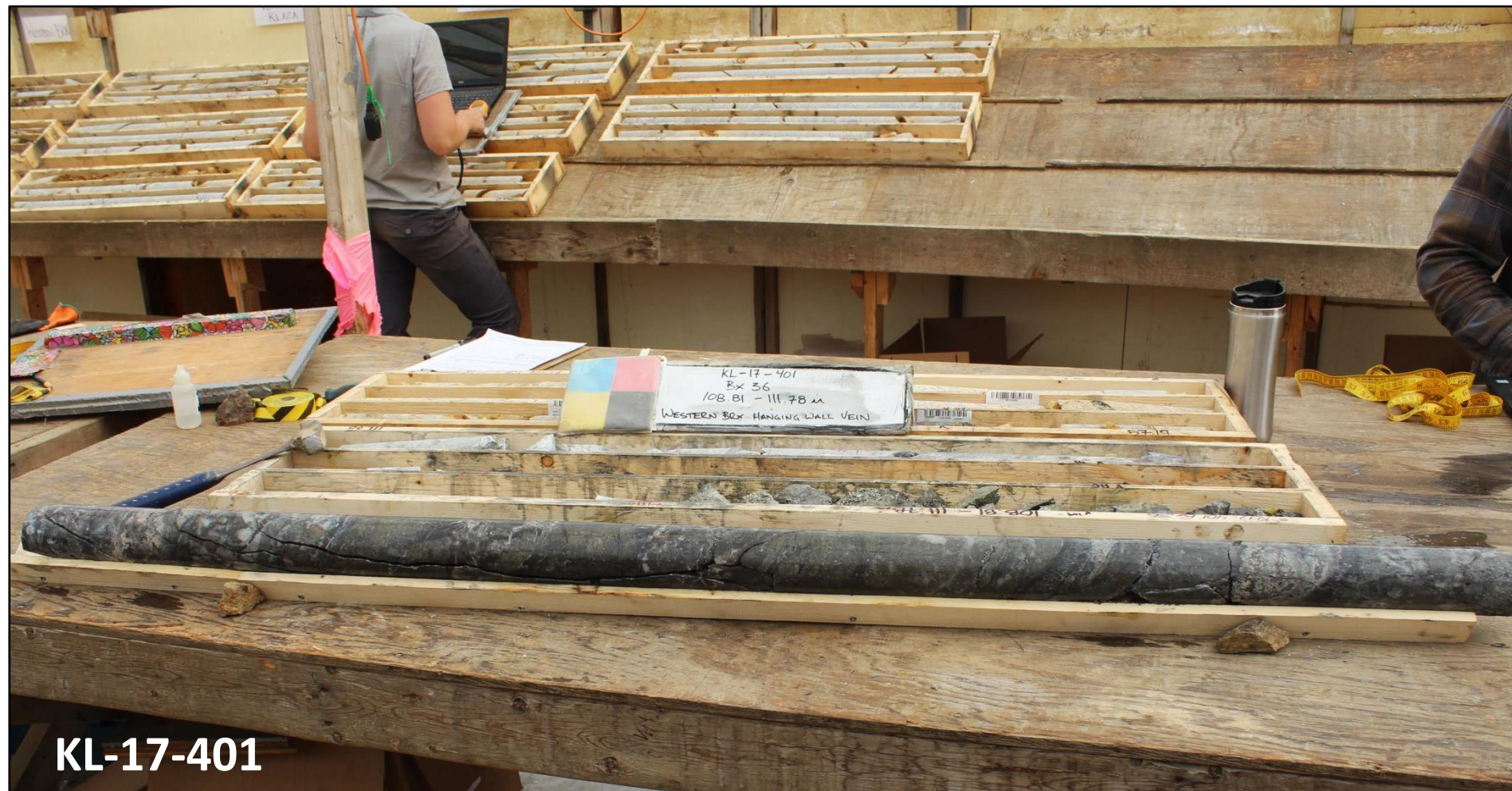
2017 Drill Discoveries

Camp

- Eleven main mineralized structures identified to date
- Large Mineralizing System - 1.8 km wide by 2.5 km long
- Porphyry to epithermal transition model
- Grades generally increase towards the west

# DISTAL EPITHERMAL VEIN MINERALIZATION

94.09 g/t gold, 545 g/t silver, 2.86% lead and 4.21% zinc over 2.63 m



KL-17-401

## Klaza Property - Total Inferred and Indicated Mineral Resource Estimate Summary

Category	Tonnes (kt)	Grade					Contained Metal				
		Au (g/t)	Ag (g/t)	Pb (%)	Zn (%)	Au EQ <sup>4</sup> (g/t)	Au (koz)	Ag (koz)	Pb (klb)	Zn (klb)	Au EQ <sup>4</sup> (koz)
<b>Indicated</b>											
<b>Pit- Constrained<sup>2,3</sup></b>	2,447	5.3	90	0.7	1.0	6.7	414	7,096	39,143	52,935	529
<b>Underground<sup>3</sup></b>	2,010	4.2	108	0.8	0.9	5.8	272	6,974	34,125	39,172	378
<b>Total</b>	<b>4,457</b>	<b>4.8</b>	<b>98</b>	<b>0.7</b>	<b>0.9</b>	<b>6.3</b>	<b>686</b>	<b>14,071</b>	<b>73,268</b>	<b>92,107</b>	<b>907</b>
<b>Inferred</b>											
<b>Pit- Constrained<sup>2,3</sup></b>	1,754	2.6	43	0.4	0.5	3.3	147	2,429	14,897	18,599	187
<b>Underground<sup>3</sup></b>	3,960	2.8	90	0.7	0.8	4.2	359	11,472	62,647	70,578	538
<b>Total</b>	<b>5,714</b>	<b>2.8</b>	<b>76</b>	<b>0.6</b>	<b>0.7</b>	<b>3.9</b>	<b>507</b>	<b>13,901</b>	<b>77,544</b>	<b>89,176</b>	<b>725</b>

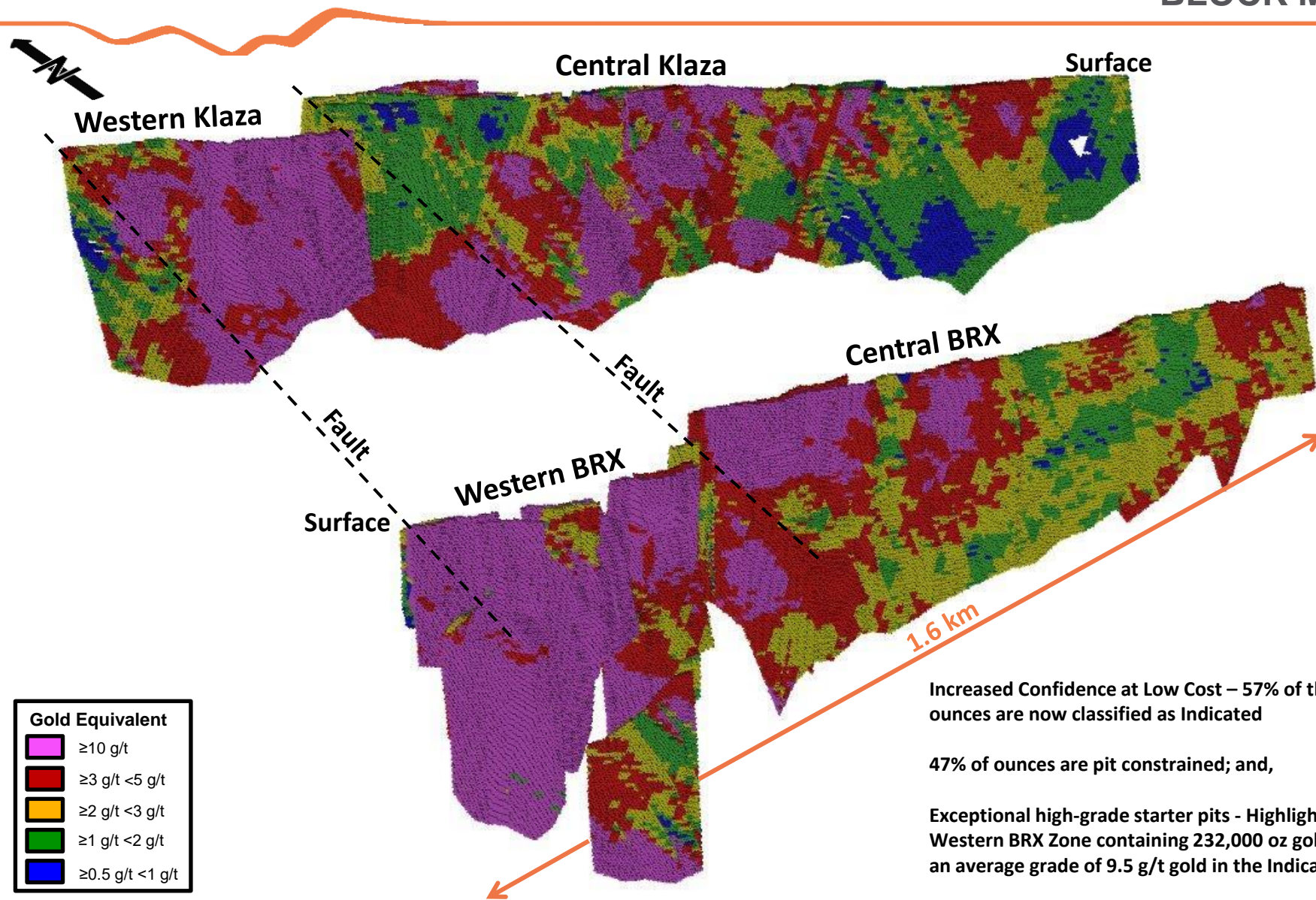
<sup>1</sup> CIM Definition Standards (2014) were used for reporting the Mineral Resources. Using drilling results to December 31, 2017. The Qualified Persons are Adrienne Ross, P.Geo. of AMC Mining Consultants (Canada) Ltd, and Nicholas Ingvar Kirchner, FAusIMM, MAIG. of AMC Mining Consultants Pty Ltd.

<sup>2</sup> Near surface Mineral Resources are constrained by an optimized pit shell at a metal prices of \$1,400/oz Au, \$19/oz Ag, \$1.10/lb Pb, and \$1.25/lb Zn.

<sup>3</sup> Cut-off grades applied to the pit-constrained and underground resource are 1.0 g/t and 2.3 g/t AuEQ respectively.

<sup>4</sup> Gold equivalent values assume \$1,400/oz Au, \$19/oz Ag, \$1.10/lb Pb, and \$1.25/lb Zn, and variable recoveries for the different metals.

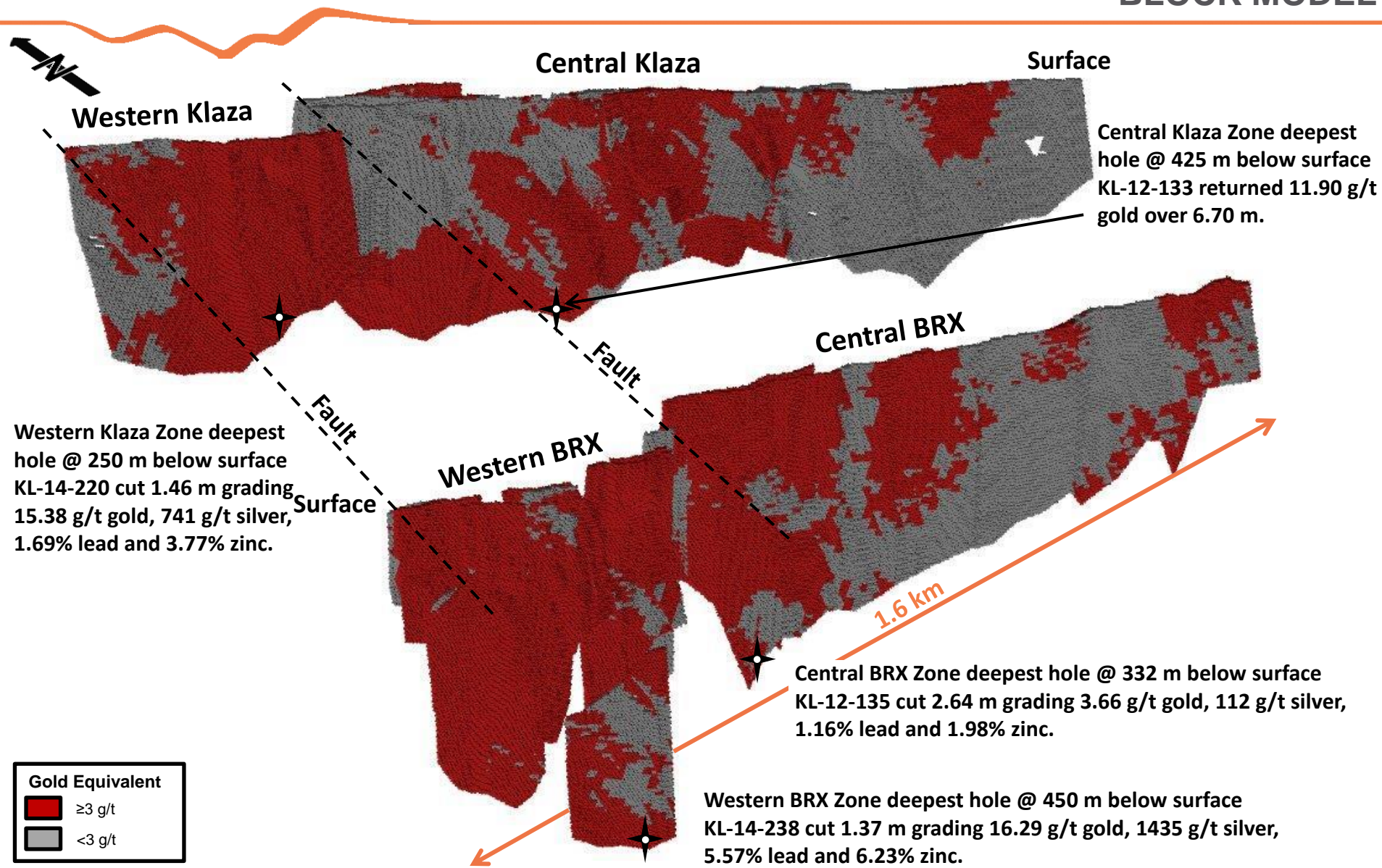
<sup>5</sup> Numbers may not add up due to rounding. Mineral Resources that are not Mineral Reserves do not have demonstrated economic viability. All metal prices are quoted in US\$ at an exchange rate of \$0.80 US to \$1.00 Canadian.



Increased Confidence at Low Cost – 57% of the total gold ounces are now classified as Indicated

47% of ounces are pit constrained; and,

Exceptional high-grade starter pits - Highlighted by the Western BRX Zone containing 232,000 oz gold in 759 kt at an average grade of 9.5 g/t gold in the Indicated category



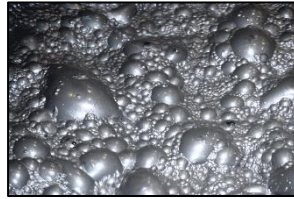


## Crushing & Grinding 1,500 tpd

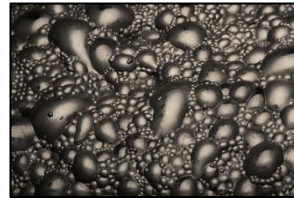
- High recovery of all metals to three separate concentrates
- Hydro-metallurgical circuit is small (~200 t/day)
- Concentrate marketing analysis done in conjunction with metallurgy and shows concentrates are marketable
- Comprehensive pre-concentration studies have been completed and show the potential to increase head-grade to mill and reduce mill and circuit size

## Sequential Flotation

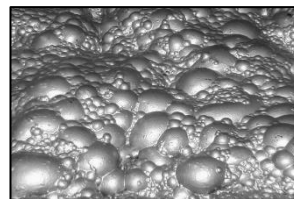
**Lead**  
(1.1% Mass Pull)



**Zinc**  
(2.2% Mass Pull)



**Arsenopyrite**  
(12.1% Mass Pull)



**59.8% Pb**  
**5,957 g/t Ag**  
**129.9 g/t Au**

## Acacia Leach



**94% Au Recovery**  
**87% to Doré**



**48.0% Zn**  
**1,318 g/t Ag**  
**13.5 g/t Au**



## POX & CIP

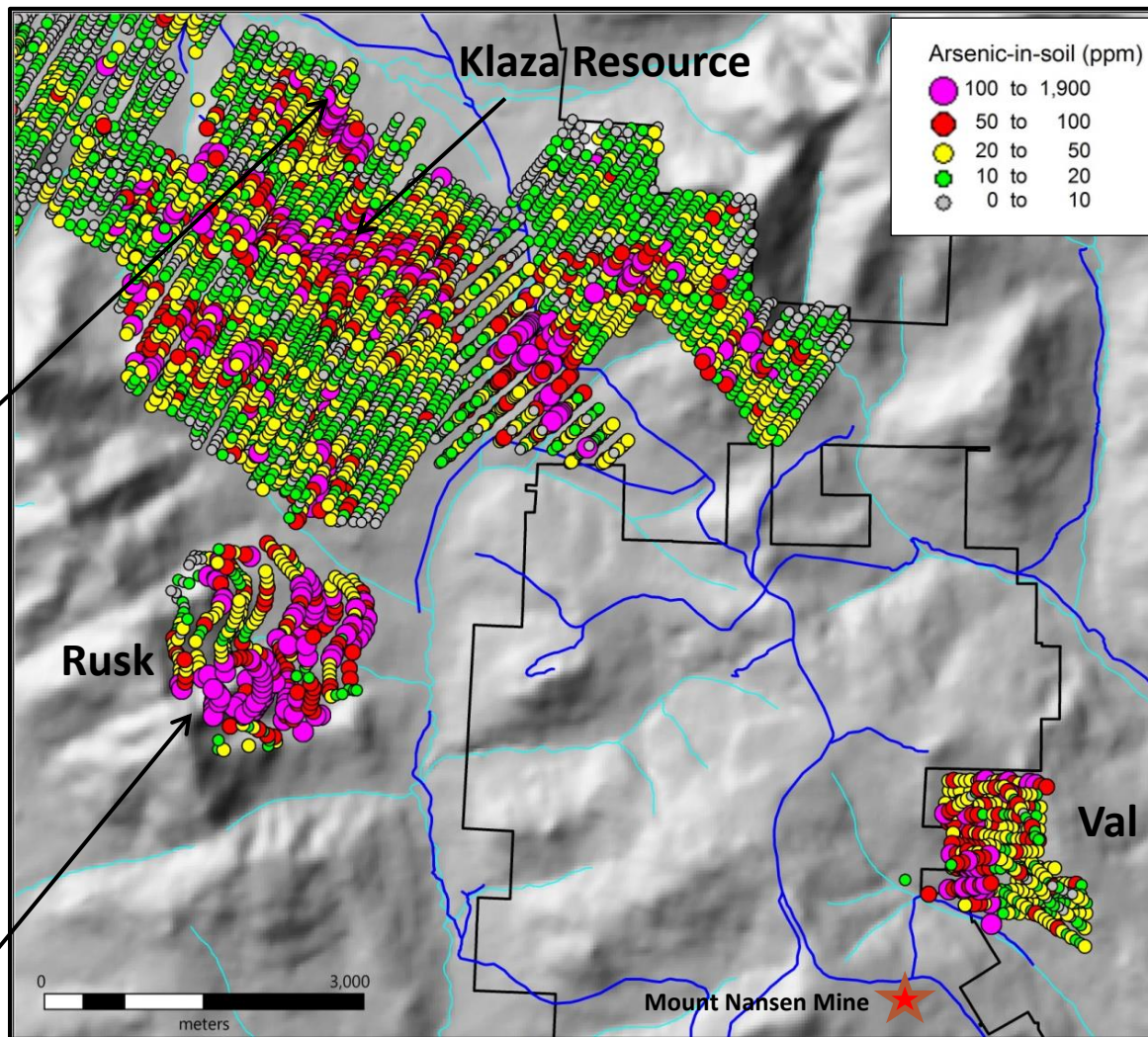
~200 tpd

# POTENTIAL FOR NEW MAJOR DISCOVERIES

- New mineralized zones discovered in exploration drill holes in 2017

Results include:

- 1.16 g/t gold and 18.7 silver over 10.12 m (drill)
- 12.60 g/t gold and 312 g/t silver over 0.46 m (drill)
- 9.43 g/t gold and 180 g/t silver over 0.86 m (drill)



- Numerous targets exist outside of the main resource area
- Rusk Target - 2.6 Km<sup>2</sup> soil geochemical anomaly (Au, Ag, Sb and As)

## Exploration Drilling

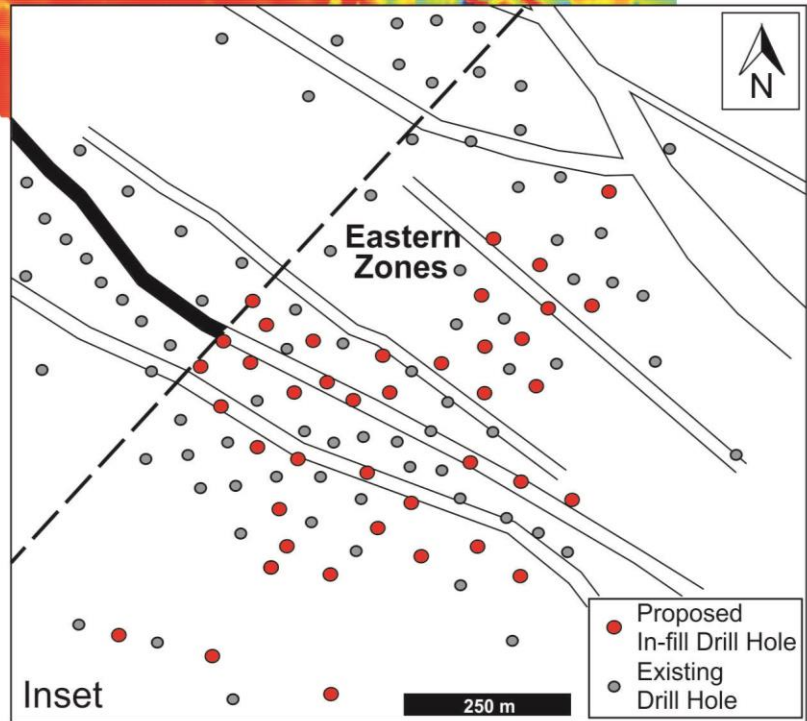
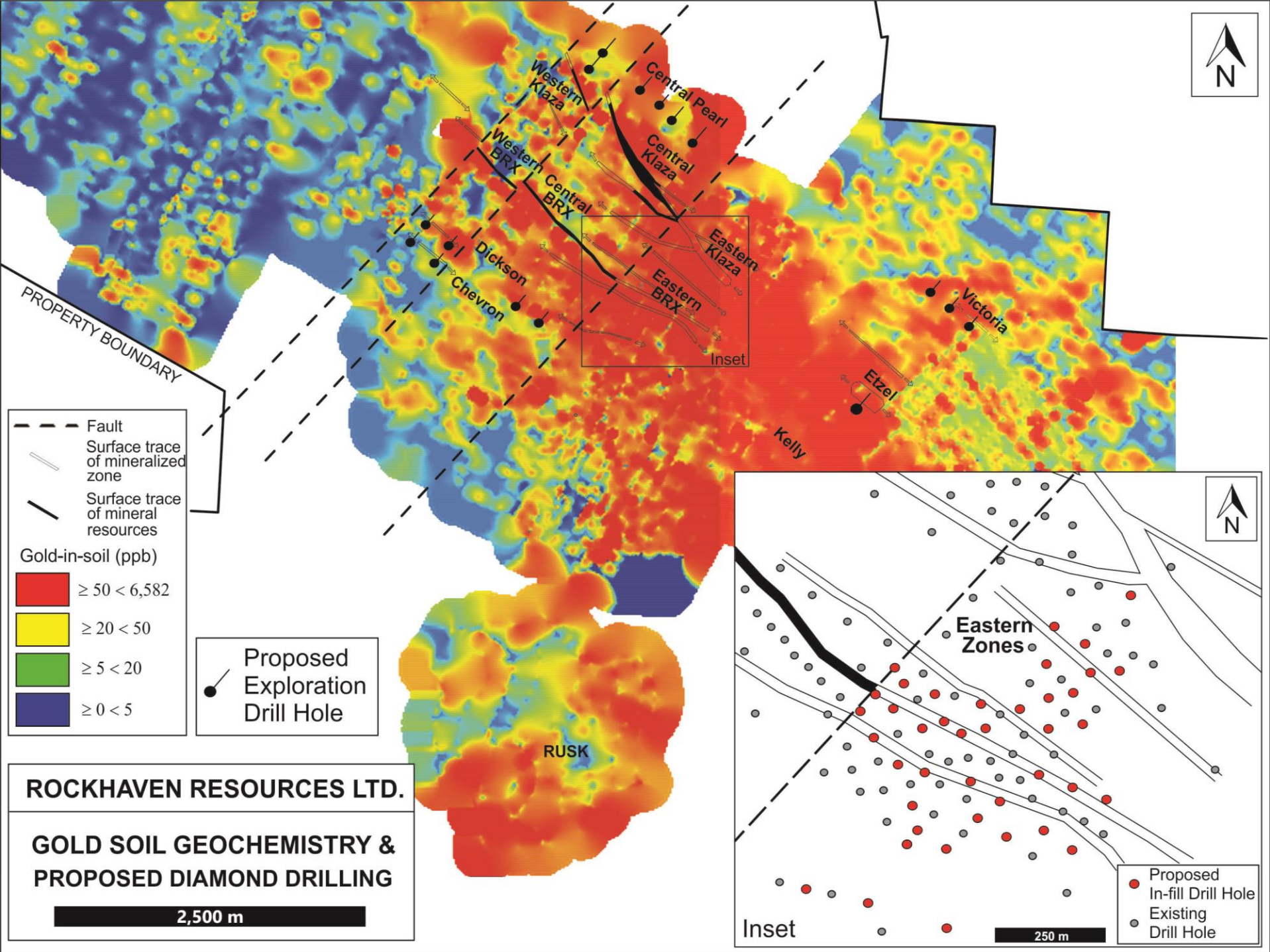
- 4000 m of exploration drilling in 19 holes to better delineate zones that parallel the current mineral resource
- The exploration objective is to ready these zones for closer spaced drilling to add new open pit and underground resources

## In-fill Drilling

- 5000 m of in-fill drilling in 38 holes to facilitate deposit modelling and resource estimation of near surface mineralization in the Eastern zones
- Updated deposit models will provide a geological framework for evaluation of deeper mineralization
- The core of the Eastern zones was estimated in a previous resource calculation but was not included in the current resource model due to changes in the geologic model in these zones. Further work is required to re-evaluate these zones
- Metallurgical testwork suggests approximately 81% of the gold in the Eastern zones can be recovered by direct cyanidation







# STRONG MANAGEMENT & INSIDER OWNERSHIP

## Management / Directors / Advisors

Matt A. Turner, B.Sc.	President, CEO and Director
Ian J. Talbot, B.Sc., LLB.	COO
Larry Donaldson, CA	CFO
Rob C. Carne, M.Sc., P.Geo.	Director
Glenn R. Yeadon, B.Comm., LLB.	Director
Bruce A. Youngman, B.Sc.	Director
Randy C. Turner, B.Sc., P.Geo	Director
R. Allan Doherty, P.Geo.	Director
David G. Skoglund	Director
Bradley J. Shisler	Director

Number of Options Outstanding	Price	Expiry Date
100,000	\$0.25	November 13, 2019
3,295,000	\$0.25	June 30, 2020
2,955,000	\$0.25	June 30, 2021
<b>TOTAL: 8,895,000</b>		

<b>SHARES OUTSTANDING:</b>	<b>157,718,093</b>
<b>SHARES FULLY DILUTED:</b>	<b>166,568,093</b>
<b>MARKET CAPITALIZATION:</b>	<b>\$17,000,000</b>
<b>WORKING CAPITAL:</b>	<b>~\$250,000</b>
<b>CORPORATE DEBT:</b>	<b>NONE</b>

SIGNIFICANT HOLDERS:	SHARES	%
STRATEGIC METALS LTD.	65,844,212	42%
INSIDERS	19,608,584	12.4%
COEUR MINING, INC.	15,150,000	9.6%
TOCQUEVILLE	4,631,500	3%
<b>TOTAL:</b>	<b>105,234,296</b>	<b>67%</b>